



# 167 Quarry Street

Woolton, Liverpool, L25 6DY

**£2,000,000**

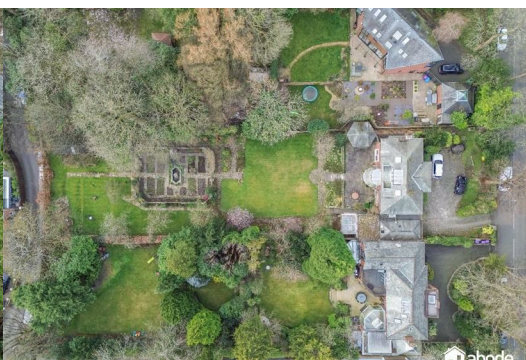


Offering one of the best plots in South Liverpool and nestled on the picturesque Quarry Street in the leafy south Liverpool suburb of Woolton, this remarkable detached house offers an exceptional living experience. Set within approximately half an acre of beautifully landscaped grounds, the property boasts an impressive five bedrooms and three bathrooms, making it ideal for families seeking both space and comfort.

As you enter, you are greeted by three elegant reception rooms, each providing a perfect setting for relaxation and entertaining. The generous layout allows for a seamless flow between the living areas, ensuring that family gatherings and social events can be enjoyed to the fullest.

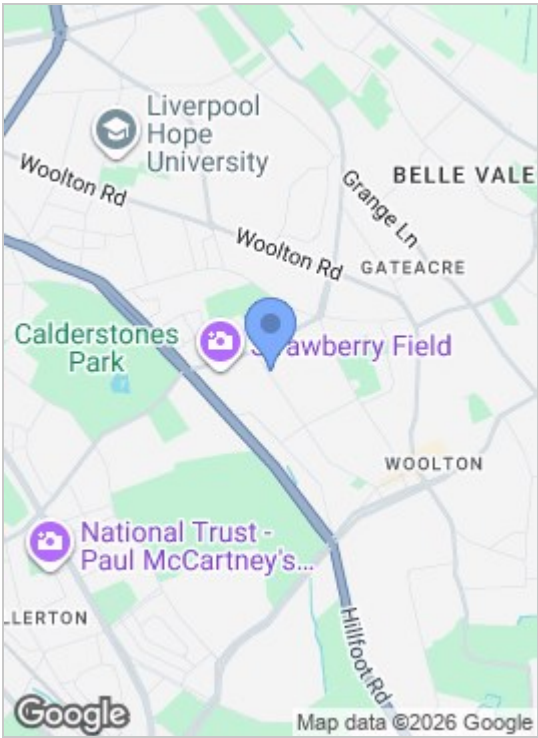
One of the standout features of this home is the stunning third-floor balcony, which offers breath-taking views over the River Mersey and the enchanting Welsh hills. This outdoor space is perfect for enjoying a morning coffee or unwinding in the evening while taking in the serene surroundings.

The property is conveniently located within easy walking distance to a selection of South Liverpool parks and the charming Woolton village, where you can find a variety of shops, cafes, and local amenities. Families will

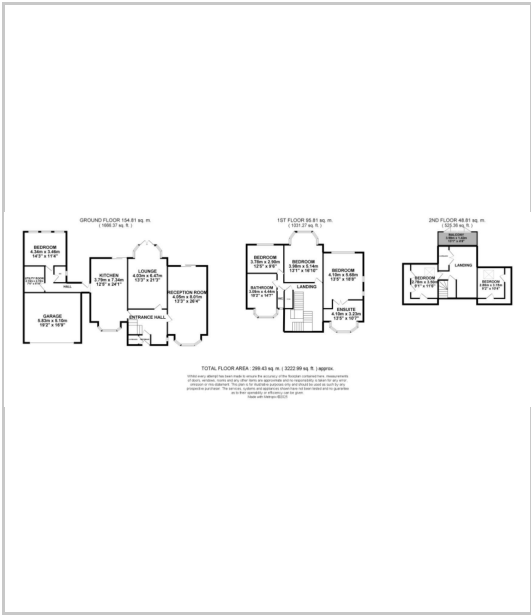




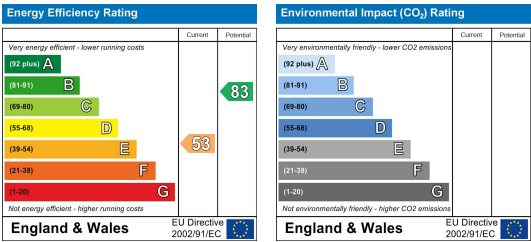
Area Map



Floor Plans



Energy Efficiency Graph



These particulars, whilst believed to be accurate are set out as a general outline only for guidance and do not constitute any part of an offer or contract. Intending purchasers should not rely on them as statements of representation of fact, but must satisfy themselves by inspection or otherwise as to their accuracy. No person in this firms employment has the authority to make or give any representation or warranty in respect of the property.